
UNCG

Jackson Library Renovation

January 16, 2025

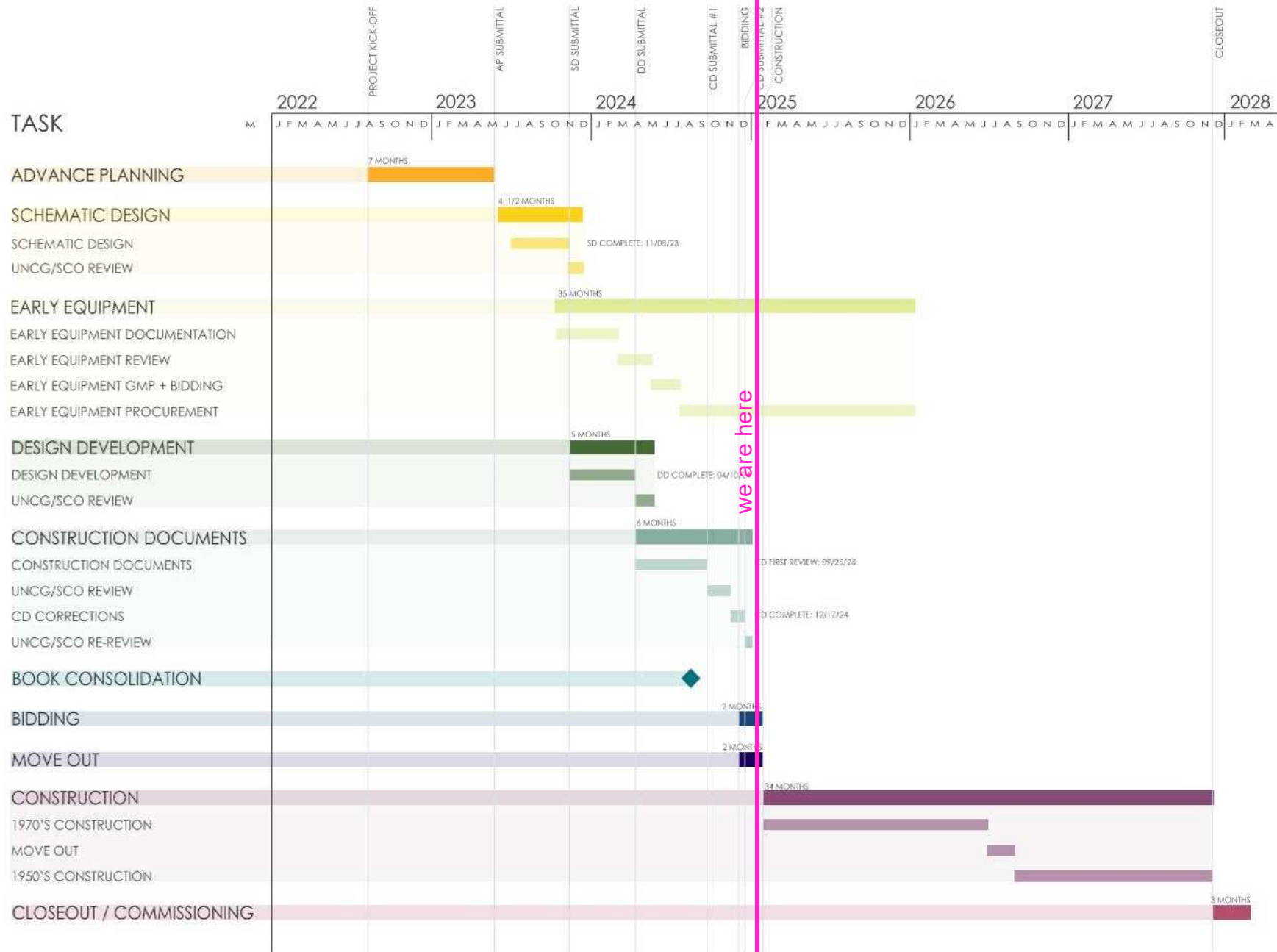
LS3P + SHEPLEY
BULFINCH

Schedule

Jackson Library Renovation

LS3P + SHEPLEY
BULFINCH

UNCG JACKSON LIBRARY SCHEDULE



Design Update

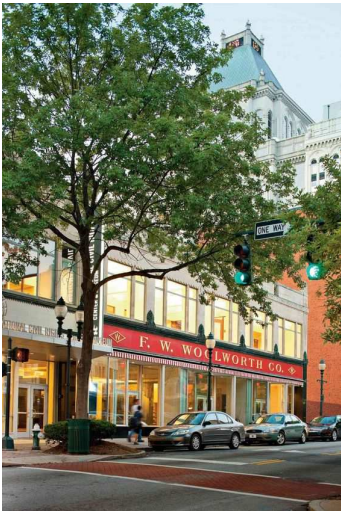
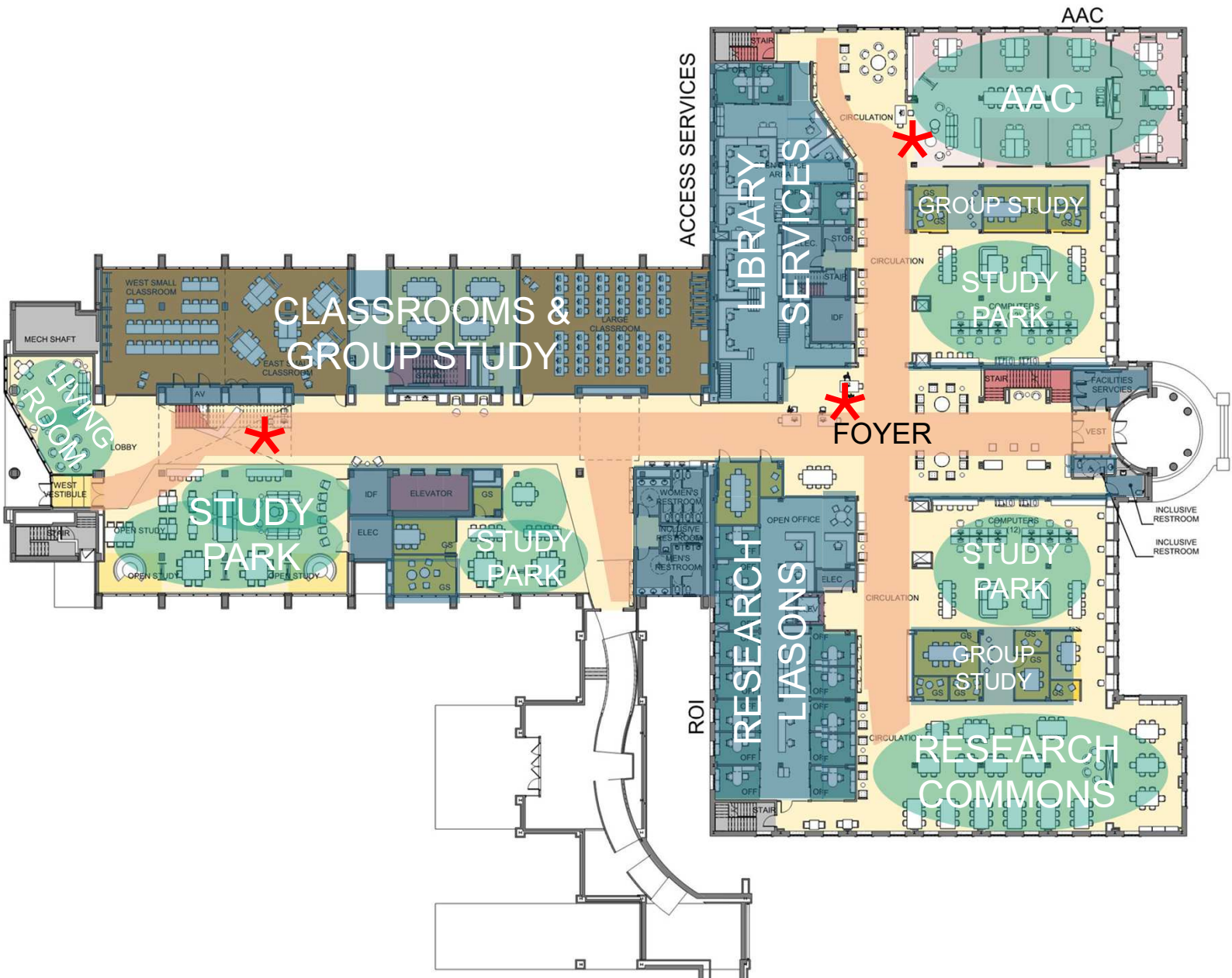
Jackson Library Renovation

LS3P + SHEPLEY
BULFINCH



West Entry – Approach

Boulevards | Street Edges | Pocket Parks



Jackson Library

An architectural rendering of the West Entry of the Jackson Library. The scene shows a modern building with a large glass facade on the left, reflecting the sky and trees. A prominent cylindrical column stands in the center. To the right, a series of tall, narrow vertical panels form a wall. The floor is paved with dark, rectangular tiles. Two stylized human figures are walking towards a glass door in the distance. The overall design is clean and contemporary.

West Entry - Update



West Entry - Update



West Entry – Study Park



West Entry - Study Park



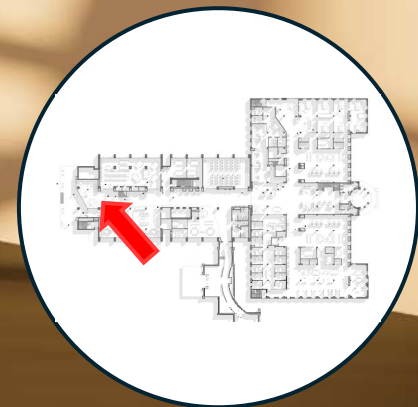
West Entry - Study Park

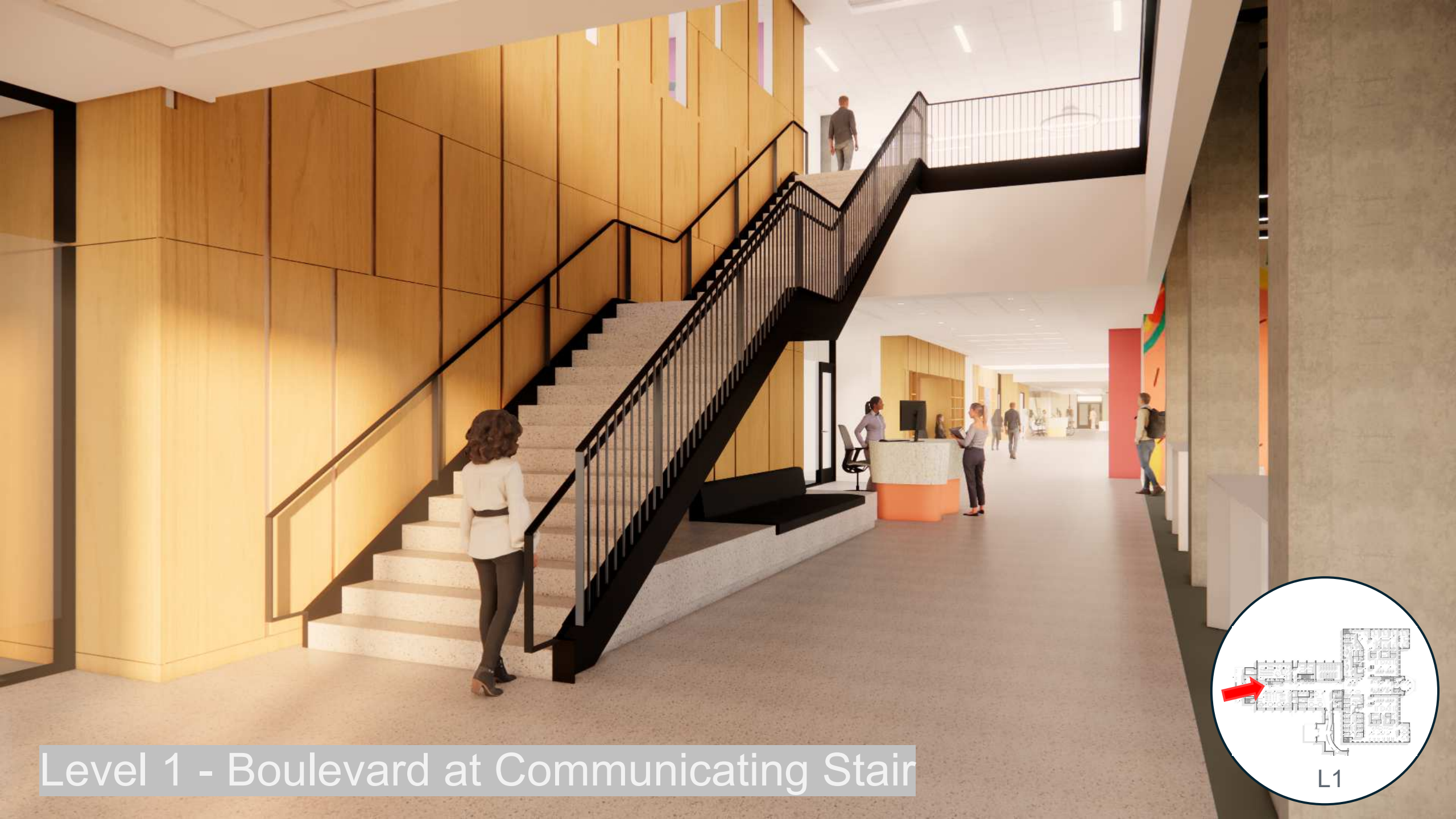


West Entry - Lobby

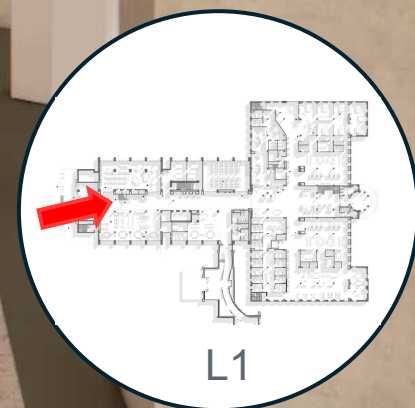


Level 1 West Living Room



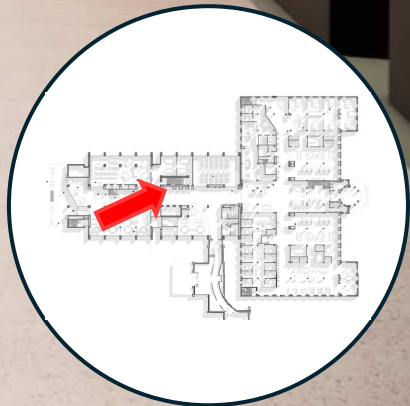


Level 1 - Boulevard at Communicating Stair



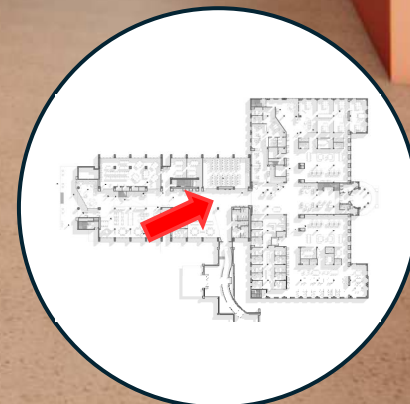


Level 1 – Boulevard at Elevator Lobby





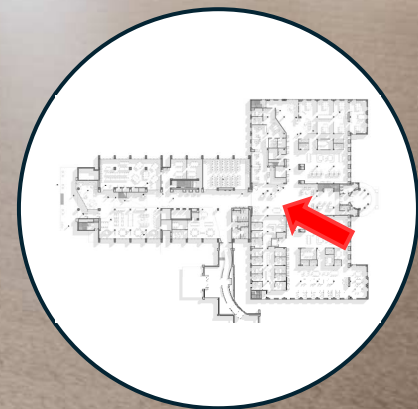
special friend
brave a friend
a friend
Blessed! FORTUNATE
Lucky MOTIVATED
Single Exploring HAPPY
Adventurous
on awesome person! caring
a girl a person
Talented
I am
LEGENDARY!



Boulevard at “Question of the Day” Wall



Level 1 - Service Point



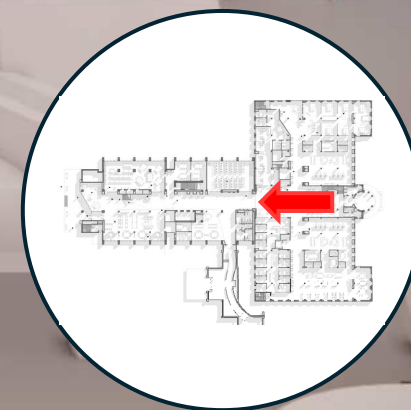


Existing



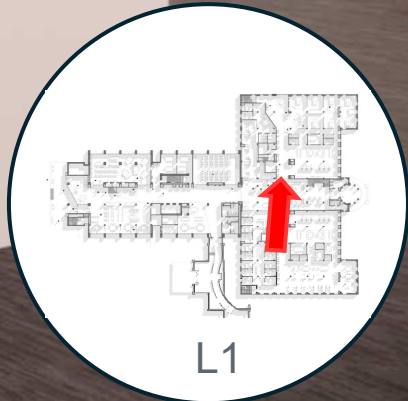
College Ave Entrance at Existing Stair

Grand Hall Coming from College Ave
Entrance Looking Toward West Entry



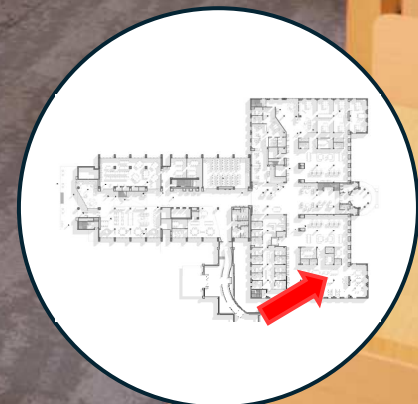


Looking to North Entry & AAC





Level 1 – Group Studies & Research Park



Construction Phasing & Logistics

Jackson Library Renovation

LS3P + SHEPLEY
BULFINCH

Mobilization & Construction - Timeline

- **Phase 1 (Tower) Mobilization:**
 - Site Fencing & Erosion Control: Anticipated start April 15, 2025
- **Phase 1 (Tower) Renovation:**
 - Exterior Demolition & Hoist Install: Anticipated April 21 – May 12, 2025
 - Interior Abatement & Demolition: Anticipated start May 13, 2025
 - Phase 1 Completion: Anticipated June 30, 2026
- **Phase 2 (1950's) Move-Out: July 1 – August 31, 2026**
- **Phase 2 (1950's) Renovation:**
 - Interior Abatement & Demolition: Anticipated start September 1, 2026
 - Phase 2 Completion: Anticipated December 8, 2027

UNCG: Service & Operations Update

Jackson Library Renovation

LS3P + SHEPLEY
BULFINCH

Jackson Library Renovation Fast Facts

| | Current Total | Projected Post-Renovation Total |
|--|--------------------|---------------------------------|
| Total patron space | 36,901 square feet | 73,429 square feet |
| Student seating capacity | 1,200 students | 2,250 students |
| Library teaching space | 5,943 square feet | 7,236 square feet |
| Enclosed/Semi-Enclosed student study space capacity | 253 students | 485 students |
| Student-focused wellness space | 0 square feet | 840 square feet |

All numbers are taken from the UNC Greensboro Jackson Library Addition + Renovation Advanced Planning Report, available upon request

Jackson Library During Construction

- The construction will take place in 2 phases, the tower and the main building.
- Library personnel have developed alternative approaches to resources and spaces during each phase.
 - For example, additional off-site storage has been obtained to shift materials around on campus, materials stored will be returned when that phase is completed.
- Communication channels have promoted the start of this process, links on next slide.
- Jackson Library is OPEN!!



Links to Services and Info.

- [Phase 1 FAQ.docx](#)
- Link to TALA partners: [TALA Privileges - Access & Use - ZSR Library](#)
- [Library Renovation Begins - UNCG University Libraries](#)
- [Jackson Library Renovation - UNCG University Libraries](#)

Next Steps

Jackson Library Renovation

LS3P + SHEPLEY
BULFINCH

Thank You!

Jackson Library Renovation

LS3P + SHEPLEY
BULFINCH