
UNCG

Jackson Library Renovation

Board of Trustees

April 11, 2024

LS3P + SHEPLEY
BULFINCH

Agenda

1. Introduction
2. Process and Schedule
3. Re-Imagined Jackson Library
4. Clarifying Questions

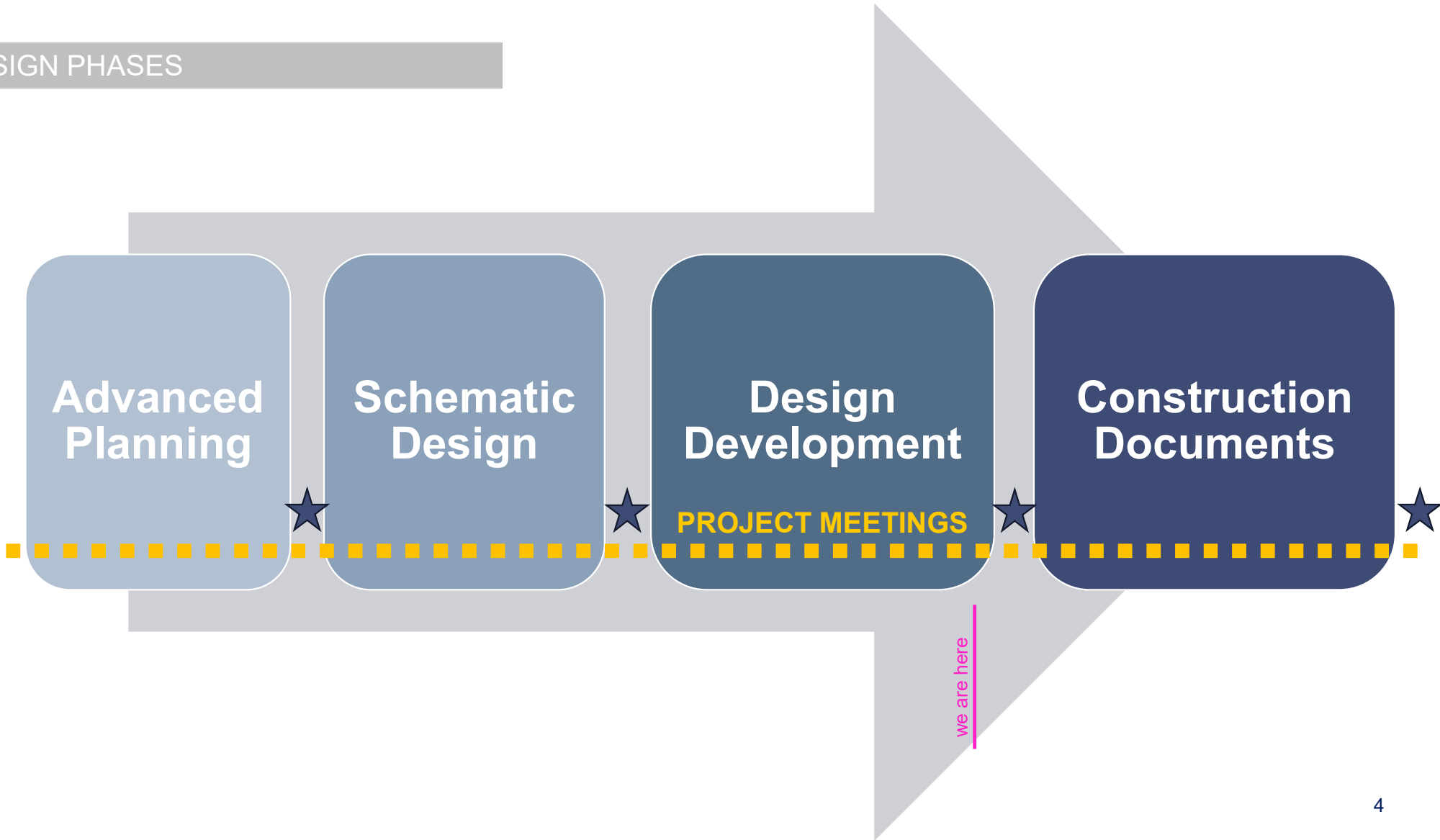


Process and Schedule

Jackson Library Renovation

LS3P + SHEPLEY
BULFINCH

DESIGN PHASES



DESIGN

Design Development: ~ 5 weeks (Early **April 2024**)
Construction Documents: 5 months (End of **Sept. 2024**)
Bidding: 2 months (Mid **January 2025**)

CONSTRUCTION

>>> *Move Dec '24 – Jan.'25*

PHASE 1 - West 1970's: 17 Months from **Feb. 2025 - June 2026**

>>> *Move July '26 – Aug.'26*

PHASE 2 - East 1950's: 15 Months from **Sept. 2026 - Nov. 2027**

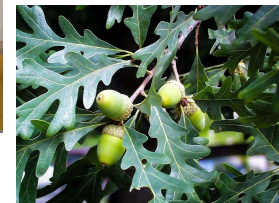
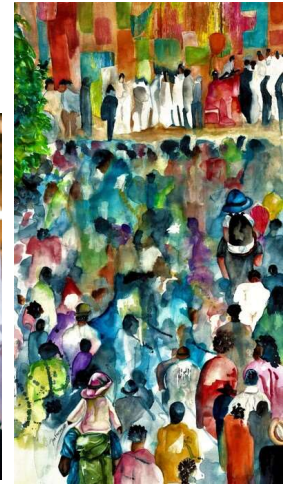
Re-Imagined Jackson Library

Jackson Library Renovation

LS3P + SHEPLEY
BULFINCH

Guiding Principles

- Create a **welcoming and inclusive library** environment that reflects the inspiring diversity of the UNC Greensboro community and fosters a sense of ownership and belonging.
- Leverage space and technology to **foster innovation**, promote **interdisciplinary collaboration**, and empower students of all academic levels to reach their highest potential.
- Provide a collection of library partners that collaboratively establishes **student success** criteria and provides the tools for students to succeed.
- Provide strong and **diverse collections** that support the teaching, research, and learning needs of the institution.
- Develop an **integrated services** library model that establishes the Jackson Library as the heart of campus and serves as a **retention/recruitment** vehicle for students and faculty.
- Leverage the library to deepen the **connection with the community**.



Campus Engagement

Top Three Needs

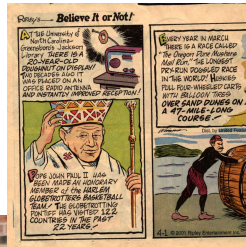
1. Coffee/Food
2. Stress Relief Activity Space
3. Indoor Plants/Natural Elements

Bottom Three Needs

1. Event Space
2. Lawn Activity Checkout
3. Family Group Study Room



Concept Drivers



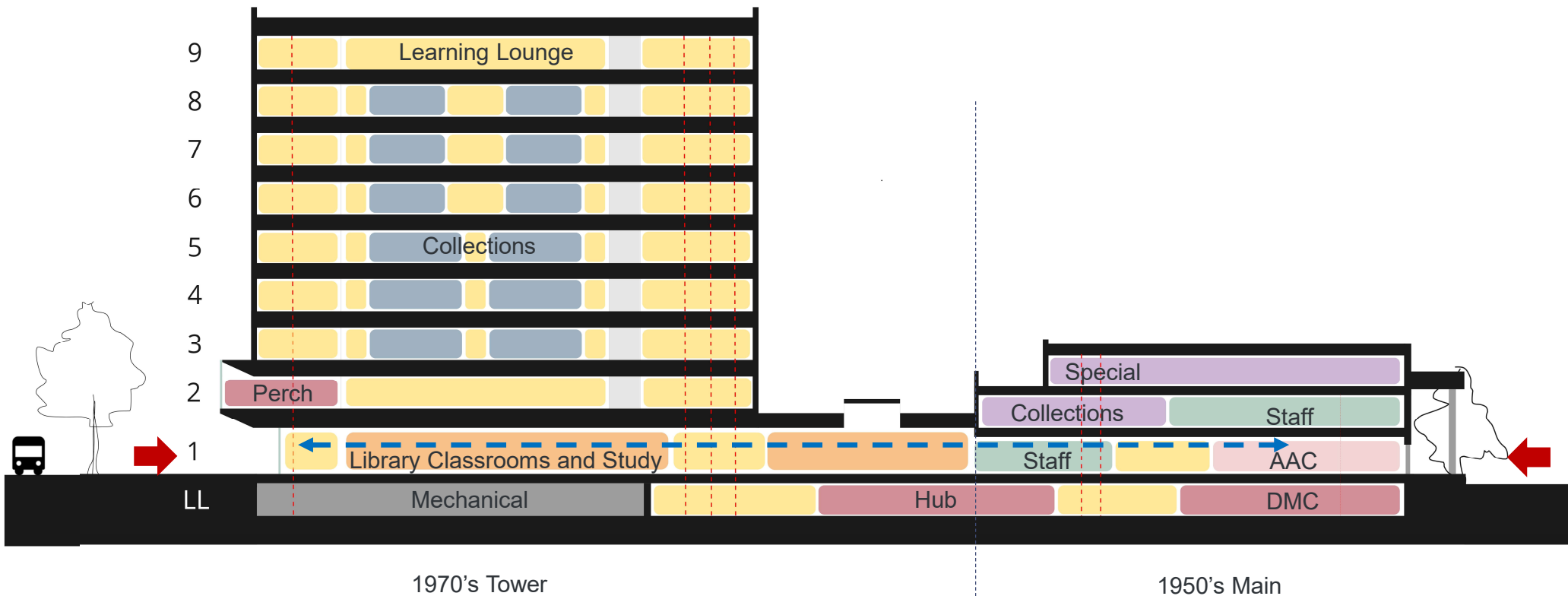
welcoming / inclusive / nurturing / playful / interactive / culturally rich / rooted / vibrant / innovative

Jackson Library Renovation Fast Facts

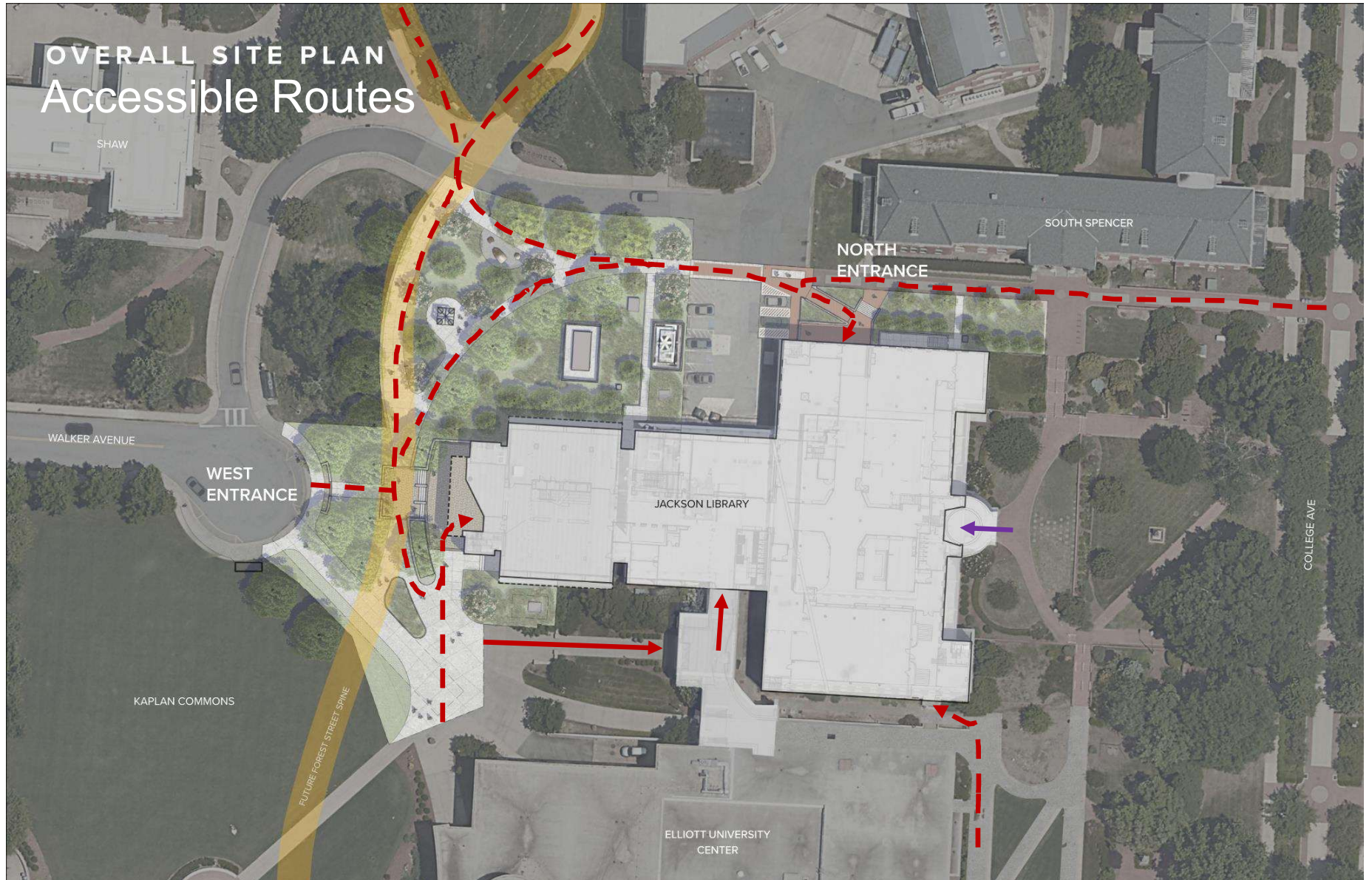
	Current Total	Projected Post-Renovation Total
Total patron space	36,901 square feet	73,429 square feet
Student seating capacity	1,200 students	2,250 students
Library teaching space	5,943 square feet	7,236 square feet
Enclosed/Semi-Enclosed student study space capacity	253 students	485 students
Student-focused wellness space	0 square feet	840 square feet

All numbers are taken from the UNC Greensboro Jackson Library Addition + Renovation Advanced Planning Report, available upon request

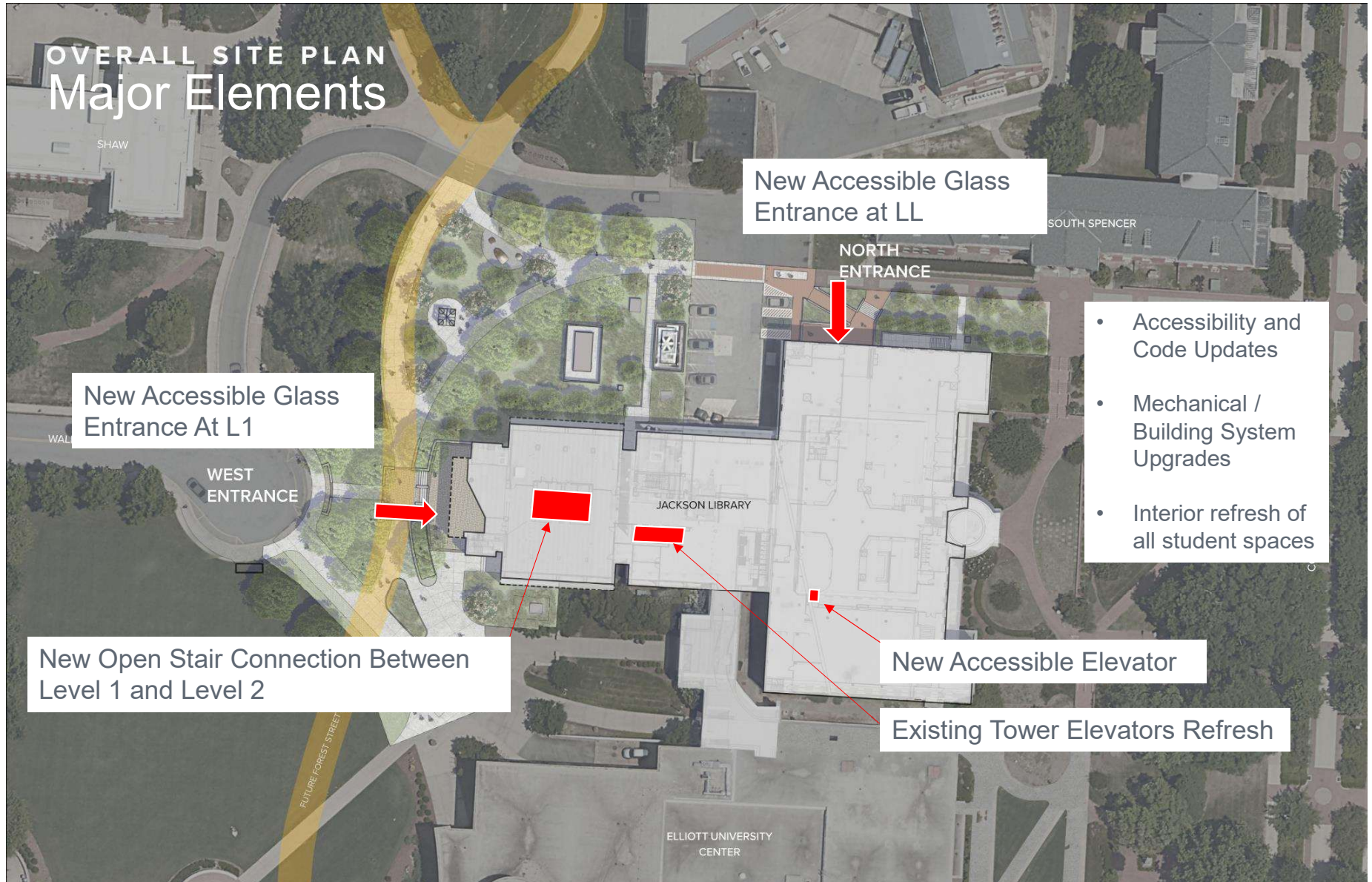
Building Organization



OVERALL SITE PLAN Accessible Routes



OVERALL SITE PLAN Major Elements



New Accessible Glass Entrance At L1

New Accessible Glass Entrance at LL

- Accessibility and Code Updates
- Mechanical / Building System Upgrades
- Interior refresh of all student spaces

New Open Stair Connection Between Level 1 and Level 2

New Accessible Elevator

Existing Tower Elevators Refresh





West Entry Coming from Moran Commons



West Entry Coming from EUC



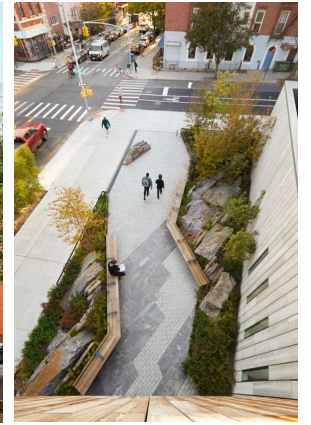
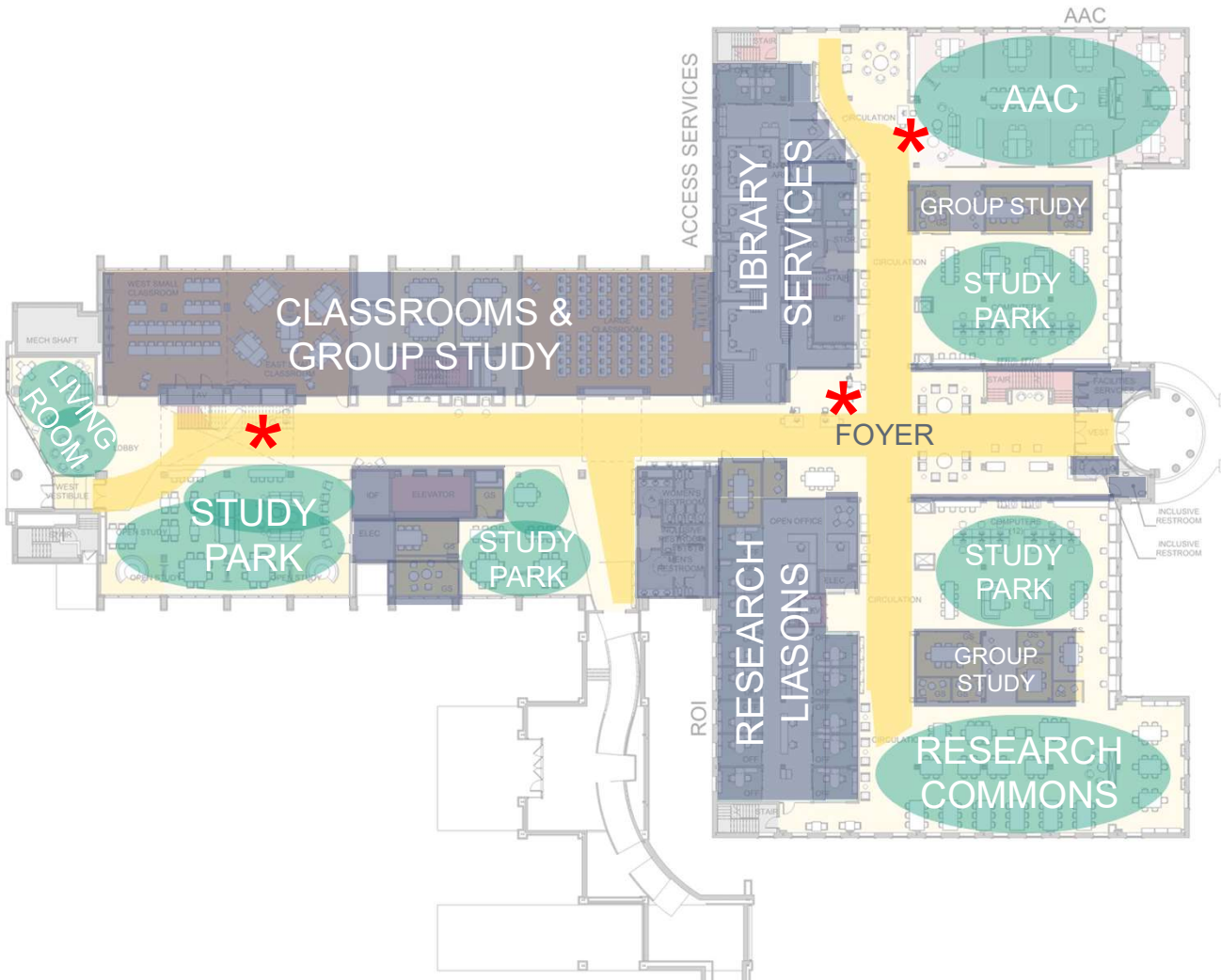
Walter Clinton Jackson Library

West Entry



West Entry – Alternate Tower Glazing

Boulevards | Street Edges | Pocket Parks

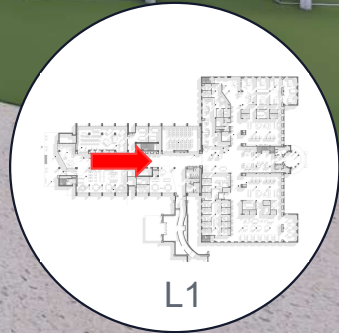


Level 1





Inside West Entry Looking East

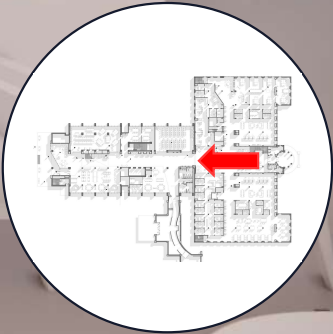




Existing



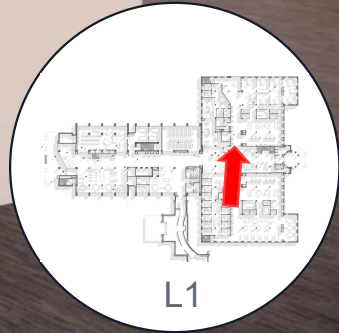
College Ave Entrance at Existing Stair



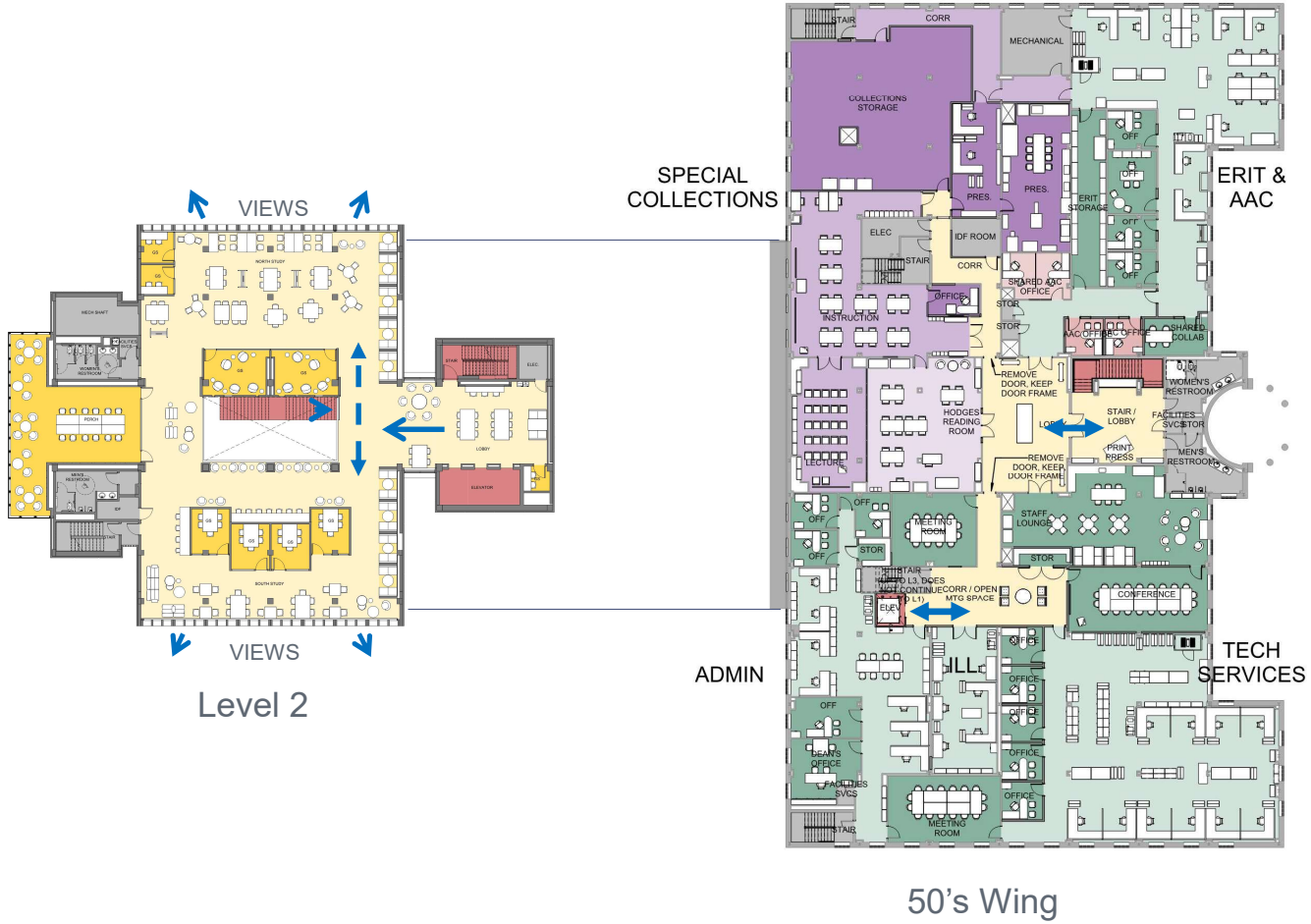
Grand Hall Coming from College Ave Entrance
Looking Toward West Entry



From Grand Hall Looking to North Entry

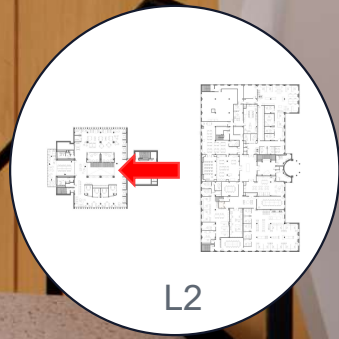


Level 2



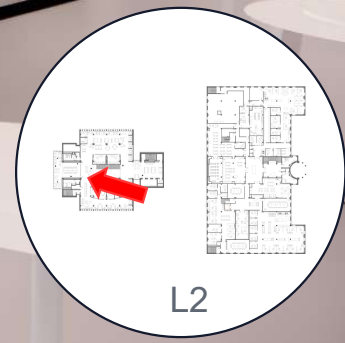


Top of Monumental Stairs Looking Toward Perch





Looking into the Perch



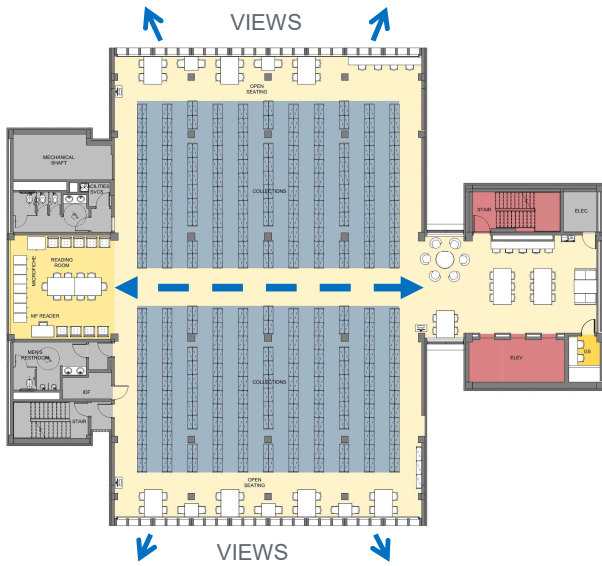
L2



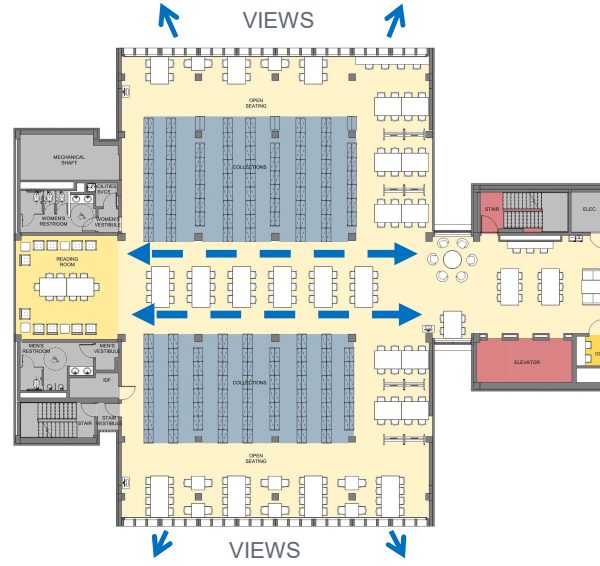
Inside Perch Looking Out



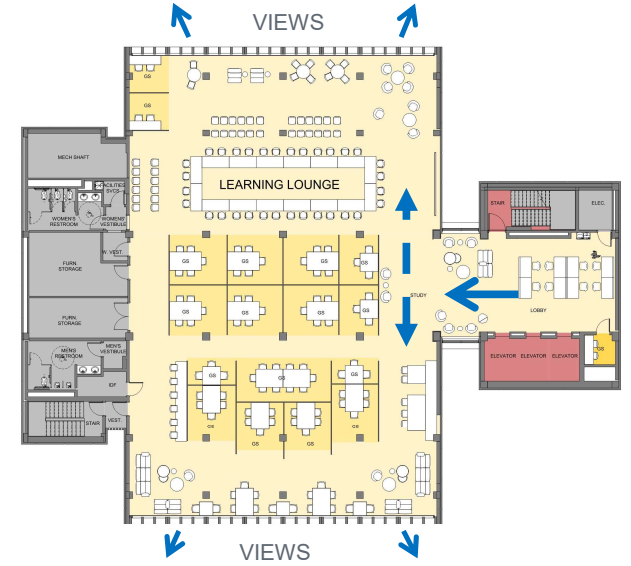
Tower Floors



Typical Dense
Stack Floors



Typical Focus
Study Floors

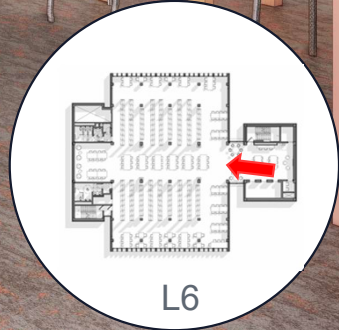


Level 9
Learning Lounge



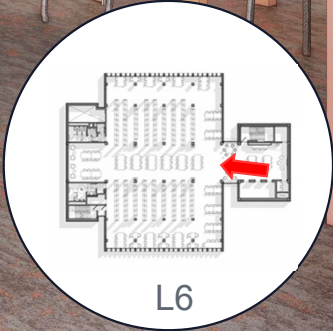


Less Dense Stack Floors

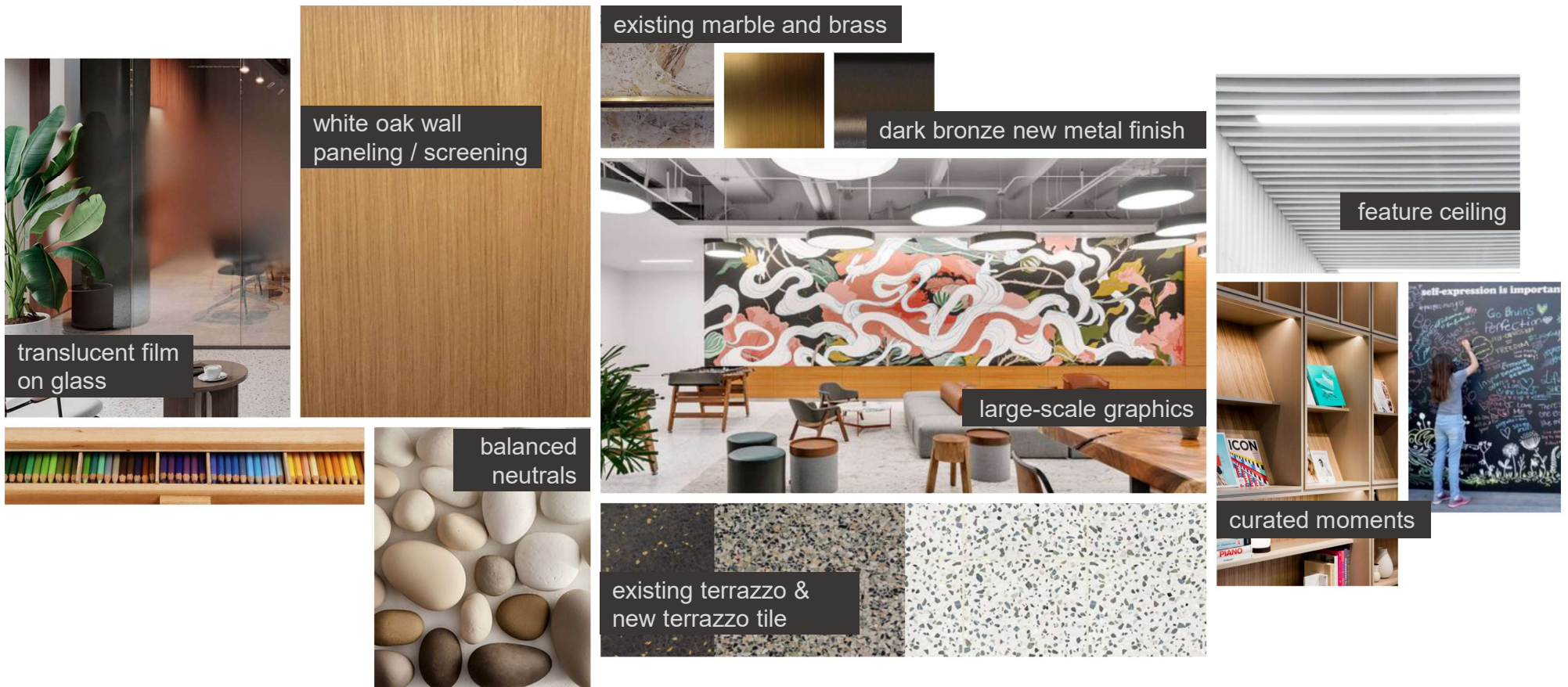




Less Dense Stack Floors –
West Glazing Alternate



Overall Aesthetics – Public Circulation Experience



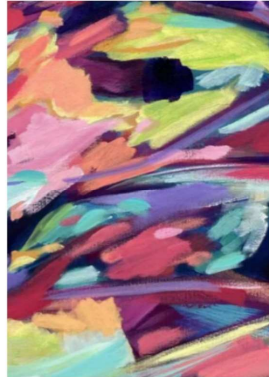
sophisticated-yet-playful / organic / graphic / authentic / approachable / layered

Overall Color Story

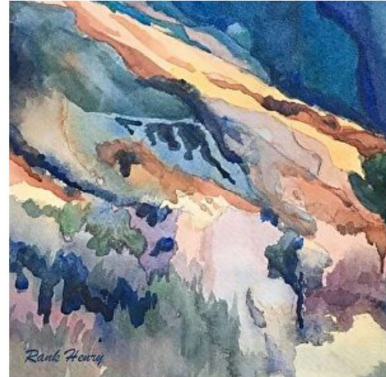


Balanced Neutral
Canvas Throughout

Lower Level
Saturated /
Vibrant



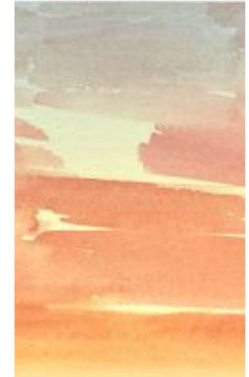
Levels 1 & 2
Earthy /
Rich



Levels 3-5
Cool /
Soft



Levels 6-8
Warm /
Soft



L9



**UNC
GREENSBORO**

Complimentary to Branding Colors



North Entry Coming From College Ave



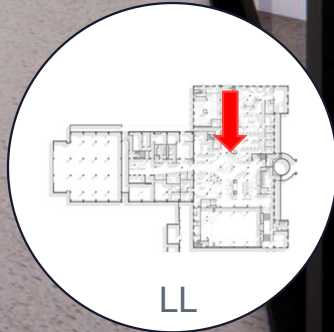
North Entry Coming From Moran Commons

Lower Level





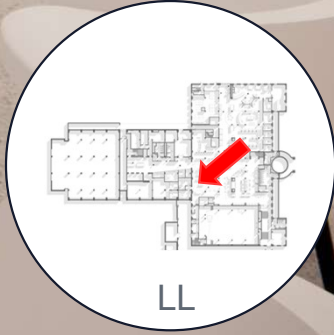
Inside North Entry Looking Toward DMC



Lower Level



Hub Coming from North Entry



Thank You!

Jackson Library Renovation

LS3P + SHEPLEY
BULFINCH