



1 Education

2 Assessment

3 Prevention

Date:

Estimate Time of Incident:

Location of incidents:

Incident Description:

Root Cause(s):

Controls Implemented & Preventive Actions Taken:

Administrative Controls and Completion Date:

Behavior Controls and Completion Date:

Engineering Controls and Completion Date:



1 Education

Date:

1-6-17

Time:

7:05am

Location of incidents:

North Carolina site

Incident Description:

Employee was walking through another employees work area and tripped over conduit running across floor..

Root Cause(s):

Unguarded slip, trip, and fall hazard located in a work area.

2 Assessment

Controls Implemented & Preventive Actions Taken:

Administrative Controls:

Communicate the necessity to identify and report hazards to Safety Department and Plant Manager prior to an injury happening.

Assess the plant to ensure that there are no other electrical cables that cross over a walkway or traffic area. If other electrical cables are identified, use a cover plate painted in safety yellow to bring attention to the trip hazard.

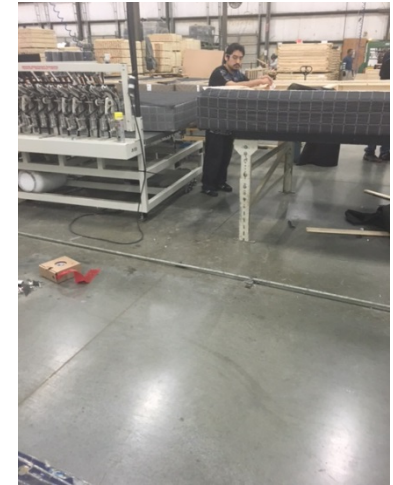
Behavior Controls:

NA

Engineering Controls:

Cover electrical cables with a cover plate and paint the cover plate safety yellow for high visibility.

3 Prevention



Covered and Painted electrical cable.

Safety paint used to draw attention to hazard

